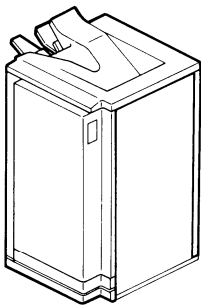


**ST25 (A377)**

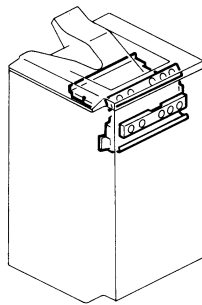
## LOCATION OF UNIT

### 1. EXTERIOR (A377)



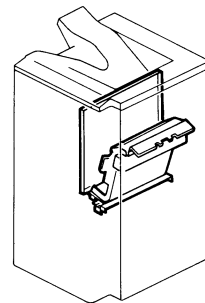
See Page 4

### 2. TRANSPORT SECTION 1 (A377)



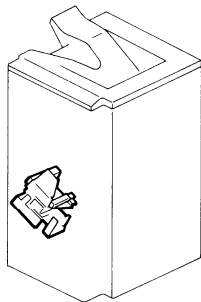
See Page 6

### 3. TRANSPORT SECTION 2 (A377)



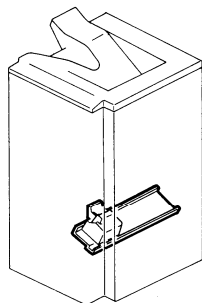
See Page 8

### 4. STAPLE UNIT 1 (A377)



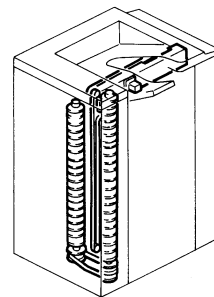
See Page 10

### 5. STAPLE UNIT 2 (A377)



See Page 12

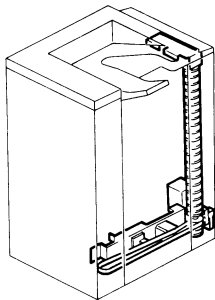
### 6. STAPLE DRIVE SECTION 1 (A377)



See Page 14

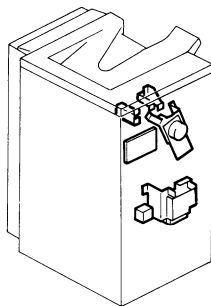
## LOCATION OF UNIT

### 7. STAPLE DRIVE SECTION 2 (A377)



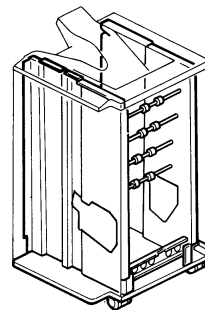
See Page 16

### 8. DRIVE AND ELECTRICAL SECTION (A377)



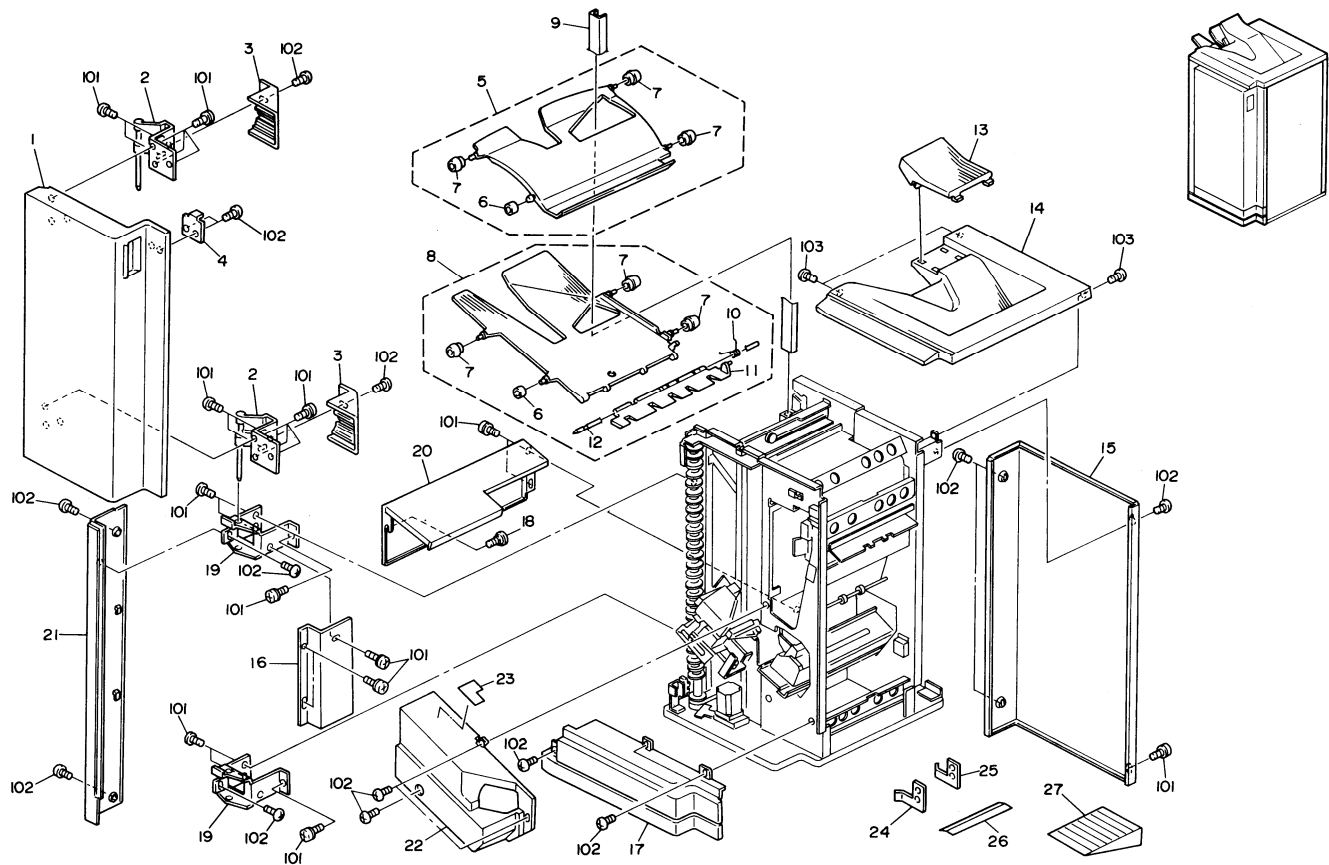
See Page 18

### 9. FRAME SECTION (A377)



See Page 20

# 1. EXTERIOR (A377)

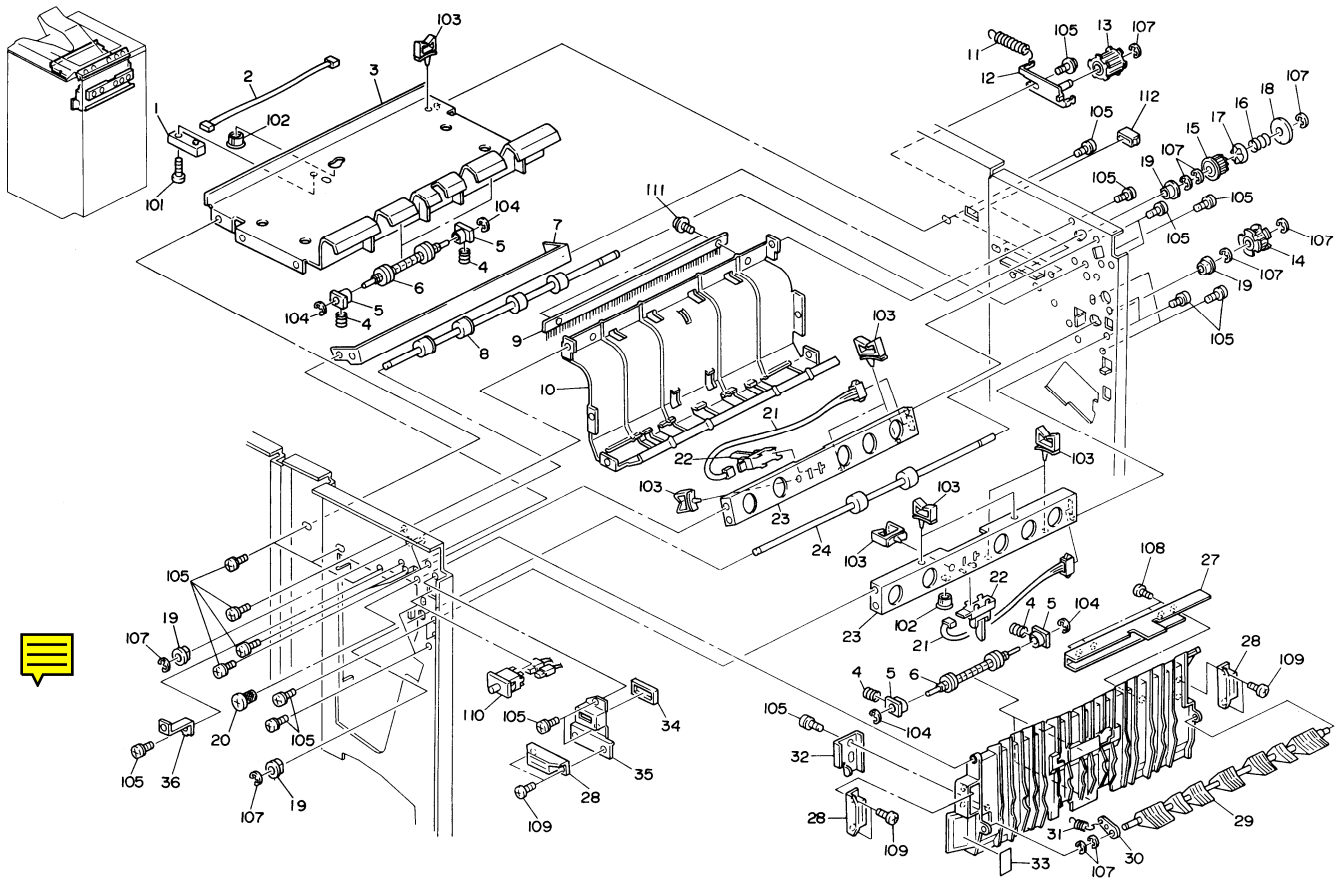


# 1. EXTERIOR (A377)

Index No.	Part No.	Description	Q'ty Per Assembly
1	A377 1571	Front Door	1
2	A377 1645	Hinge	2
3	A377 1581	Hinge Cover	2
4	A377 1651	Magnet Catch Plate	1
5	A377 3460	Supporting Bin	1
6	A377 3447	Small Guide Roller	21
7	A377 3446	Guide Roller	63
8	A377 3410	Bin Ass'y	20
9	A377 4151	Jogger Plate	1
10	AA06 6225	End Fence Spring	20
11	A377 3431	Bin End Fence	20
12	A377 3441	End Fence Shaft	20
13	A377 1611	Small Proof Tray	1
14	A377 1511	Top Cover	1
15	A377 1541	Rear Cover	1
16	A377 1631	Upper Wheel Cover	1
17	A377 1531	Lower Cover	1
18	5875 2088	Shoulder Screw- M4	1
19	A377 1641	Hinge Bracket	4
20	A377 1551	Left Cover	1
21	A377 1521	Front Left Cover	1
22	A377 1601	Inner Cover	1
23	A377 1850	Decal - Misfed Removal	1
24	A377 1187	Rear Joint Bracket	1
25	A377 1186	Front Joint Bracket	1
26	A377 2122	Entrance Guide	1
27	A498 6085	Caster Stopper	2

Index No.	Part No.	Description	Q'ty Per Assembly
101	0950 4006B	Screw - M4x6	
102	0344 0060F	Philips Truss Head Screw - M4x6	
103	0344 0080F	Philips Truss Head Screw - M4x8	

## 2. TRANSPORT SECTION 1 (A377)

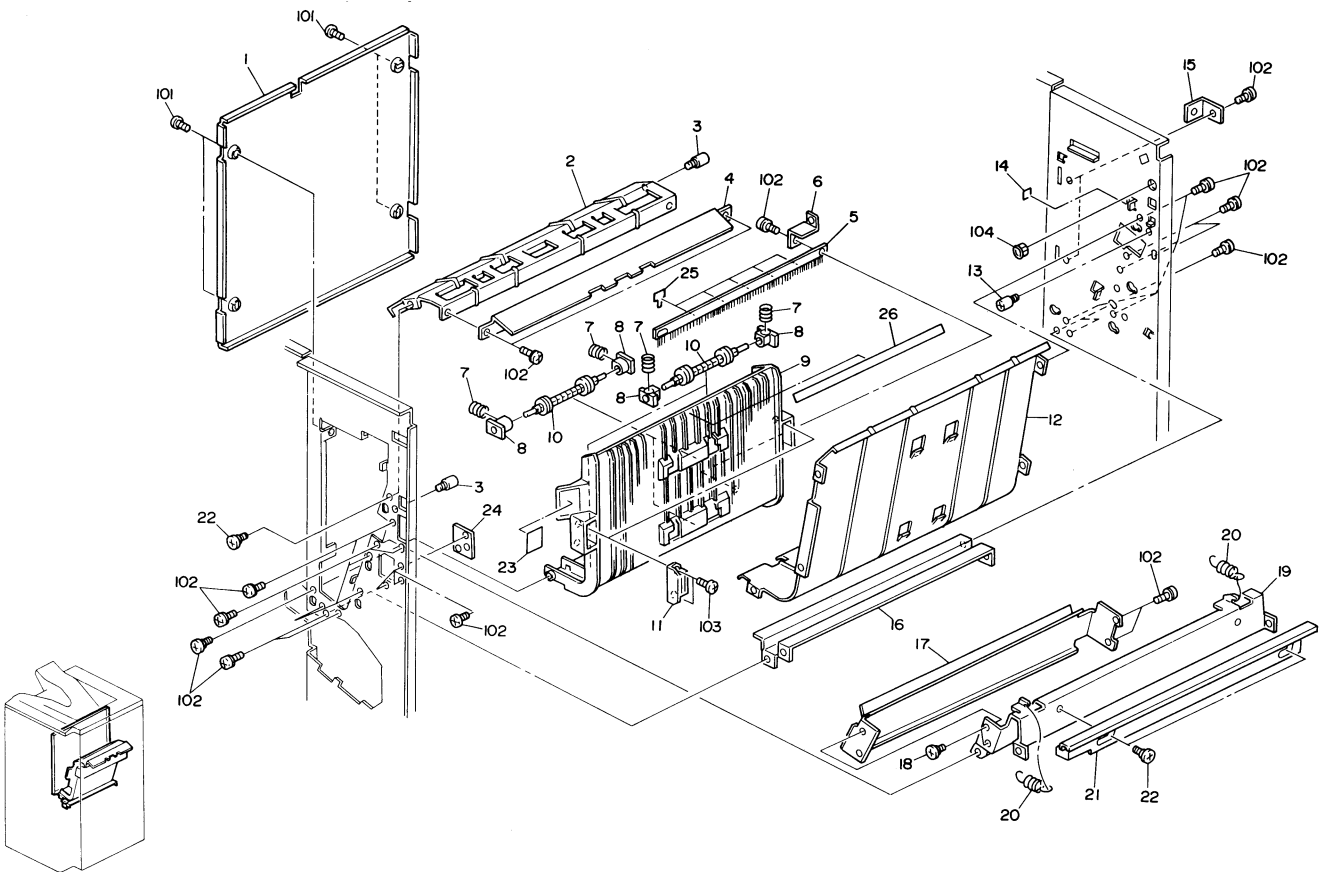


## 2. TRANSPORT SECTION 1 (A377)

Index No.	Part No.	Description	Q'ty Per Assembly
1	AW02 0025	Lower Bin/jam Sensor	1
2	A377 5470	Upper Bin Sensor Harness	1
3	A377 1141	Upper Stay	1
4	A458 2479	Lock Pin Spring	8
5	AA08 0034	Bushing - 4x5x7	8
6	AF02 2068	Driver Roller	8
7	A377 2316	Upper Left Guide	1
8	AF02 0307	Exit Roller	1
9	AA12 0027	Antistatic Brush	1
10	A377 2311	Right Guide Plate	1
11	AA06 0092	Release Spring	1
12	A377 2221	Tightener	1
13	AB03 0278	Idler - 20z	1
14	AB03 0374	Timing Pulley - 20Z	1
15	A354 1261	Pulley - 20Z	1
16	A300 3826	Pressre Sppring	1
17	A354 1266	Torque Limiter Collar	1
18	A300 3812	Spacer - 6x22x1.5	1
19	AA08 0071	Bushing 4x10x6	4
20	5413 1882	Stepped Screw	1
21	A377 5460	Transport Sensor Harness	2
22	AW02 0049	Photointerruptor - OS - 580213-703	2
23	A377 1151	Stay	2
24	AF02 0305	Transport Roller	1
25	5053 0447	Bushing - 6mm	2
26	A377 2321	Left Guide Plate	1
27	A377 2326	Support Plate	1
28	AG07 0004	Magnetic Catch	3
29	A377 2331	Junction Gate	1
30	A377 2332	Junction Gate Lever	1
31	5940 2641	Feed-in Solenoid Spring	1
32	A377 2333	Junction Gate Bracket	1
33	A377 1870	Decal - R1	1
34	A377 1662	Door Switch Actuator	1
35	A377 1661	Door Switch Cover	1

Index No.	Part No.	Description	Q'ty Per Assembly
36	5442 5839	Angle - Cord Clamp 30	1
101	0313 0140B	Philips Pan Head Screw - M3x14	
102	1106 0193	Bushing - 7.9mm	
103	1105 0196	Harness Clamp	
104	0720 0030E	Retaining Ring - M3	
105	0951 4006B	Philips Screw With Washer- M4x6	
106	0720 0060E	Retaining Ring - M6	
107	0720 0040E	Retaining Ring - M4	
108	0414 0122W	Tapping Screw - M4x12	
109	0353 0060W	Philips Pan Head Screw - M3x6	
110	1204 2334	Safety Switch - FA1L-AA20	
111	0951 4006B	Philips Screw With Washer- M4x6	
112	1102 4924	CT Connector-4P	

### 3. TRANSPORT SECTION 2 (A377)



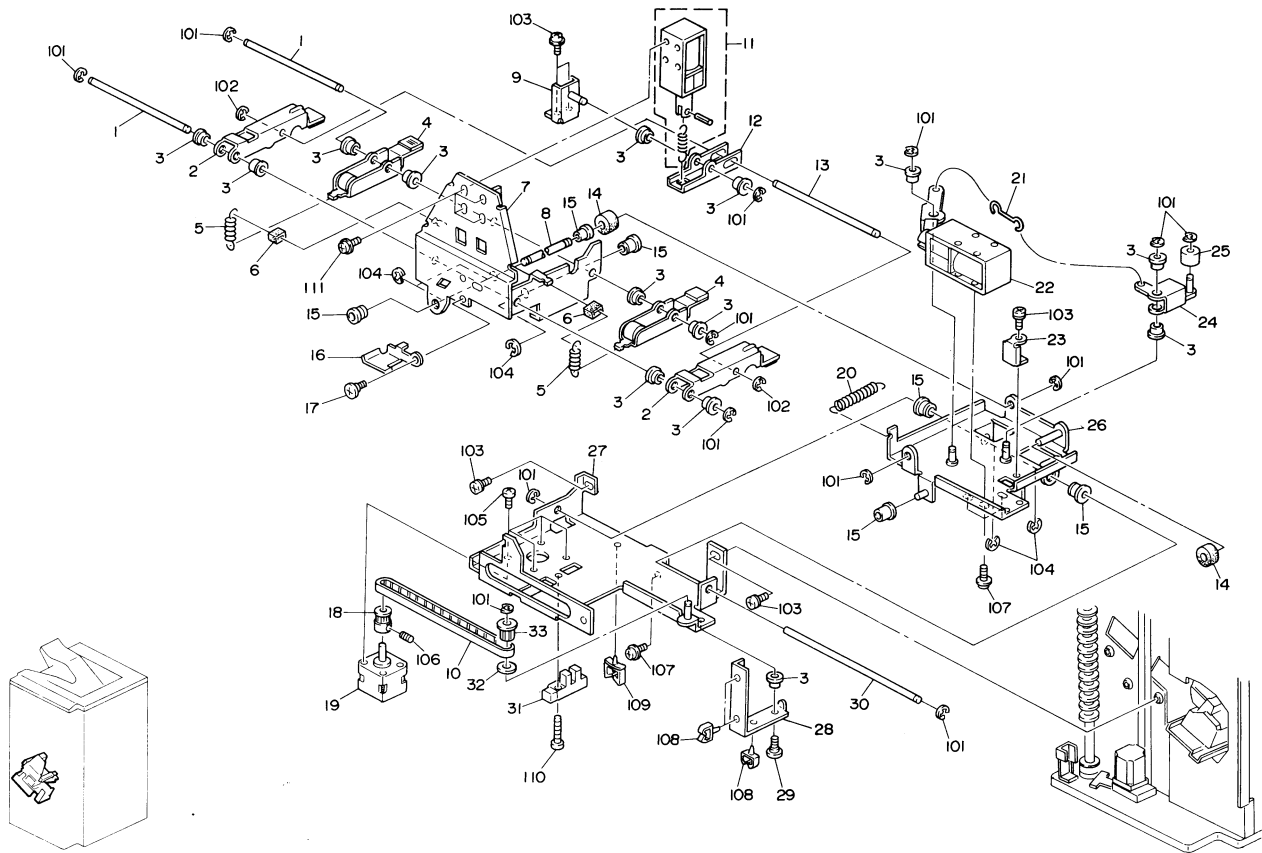


### 3. TRANSPORT SECTION 2 (A377)

Index No.	Part No.	Description	Q'ty Per Assembly
1	A377 1621	Upper Inner Cover	1
2	A377 2111	Lower Entrance Guide	1
3	5413 1875	Knob Screw	1
4	A377 2121	Relay Guide	1
5	A377 2144	Antistatic Brush	1
6	A377 2142	Grounding Spring Plate	1
7	A458 2479	Lock Pin Spring	8
8	AA08 0034	Bushing - 4x5x7	8
9	A377 2141	Left Lower Guide	1
10	AF02 2068	Driver Roller	4
11	AG07 0004	Magnetic Catch	1
12	A377 2131	Right Lower Guide	1
13	AA14 3059	Pin - 6x16	1
14	A377 1138	Magnet Catch Seal	1
15	A377 1656	Inner Cover Angle	2
16	A377 1171	Exit Stay	1
17	A377 2161	Middle Guide Plate	1
18	5403 2075	Stepped Screw	2
19	A377 1181	Middle Stay	1
20	AA06 0551	Pressure Spring	2
21	A377 1182	Joint Lever	1
22	54131882	Stepped Screw	3
23	A377 1875	Decal - R2	1
24	A377 1126	Front Cover Plate	1
25	A377 2146	Exit Guide Mylar	5
26	A377 2166	Middle Guide Mylar	1

Index No.	Part No.	Description	Q'ty Per Assembly
101	0344 0060F	Philips Truss Head Screw - M4x6	
102	0950 4006B	Screw - M4x6	
103	0353 0060W	Philips Pan Head Screw - M3x6	
104	1106 0193	Bushing - 7.9mm	

#### 4. STAPLE UNIT 1 (A377)



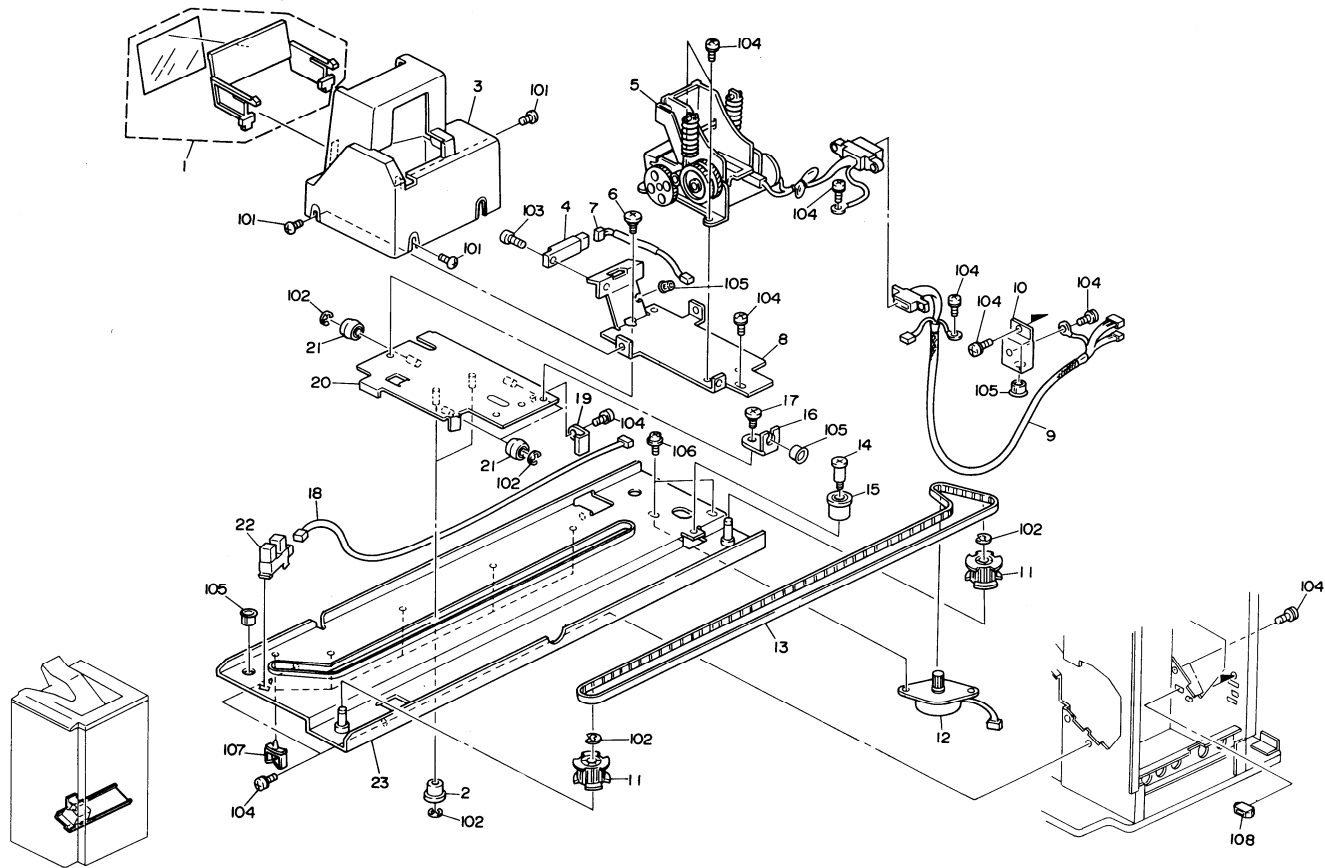
#### 4. STAPLE UNIT 1 (A377)

Index No.	Part No.	Description	Q'ty Per Assembly
1	A377 4432	Gripper Arm Shaft - M6	2
2	A377 4411	Upper Gripper Arm	2
3	AA08 0072	Bushing - 6x10X3	14
4	A377 4413	Lower Gripper Arm	2
5	AA06 0061	Spring - Fork Gate Lever	2
6	A498 4625	Arm Cushion	2
7	A377 4436	Gripper Solenoid Bracket	1
8	A377 4465	Gripper Guide Rod	1
9	A377 4425	Solenoid Arm Bracket	1
10	AA04 3355	Timing Belt - B40S2M320	1
11	A377 4435	Gripper Arm Solenoid	1
12	A377 4421	Solenoid Lever	1
13	A377 4433	Gripper Arm Shaft - M4	1
14	A377 4466	Cushion	2
15	AA08 2042	Bushing - 6x10x6.5mm	6
16	A377 4434	Gripper Lock Plate	1
17	5413 1882	Stepped Screw	1
18	AB03 0216	Pulley - 15Z	1
19	AX05 0057	Stepping Motor - DC24V 3.84W	1
20	AA06 0547	Tension Spring	1
21	A377 4463	Hook	1
22	A377 4460	Gripper Slid Solenoid	1
23	A377 4491	Timing Belt Stopper	1
24	A377 4451	Slider Arm	1
25	A377 4455	Slide Roller	1
26	A377 4441	Slider Support Bracket	1
27	A377 4471	Gripper Bracket	1
28	A377 4488	Gripper Harness Bracket	1
29	5419 5714	Stepped Screw - M4	1
30	A377 4485	Gripper Guide Shaft	1
31	AW02 0022	Photointerruptor	1
32	A498 4665	Pulley Flange	1
33	AB03 0218	Pulley - 15Z	1

Index No.	Part No.	Description	Q'ty Per Assembly
101	0720 0040E	Retaining Ring - M4	
102	0720 0030E	Retaining Ring - M3	
103	0950 4006B	Screw - M4x6	
104	0720 0080E	Retaining Ring - M8	
105	0313 0050B	Phillips Pan Head Screw - M3x5	
106	0574 0040E	Hexagon Headless Set Screw - M4x4	
107	0951 4006B	Phillips Screw With Washer - M4x6	
108	1105 0234	Clamp	
109	1105 0291	Wire Saddle	
110	0314 0100B	Phillips Pan Head Screw - M4x10	
111	0951 3005B	Phillips Screw With Flat Washer M3x5	



## 5. STAPLE UNIT 2 (A377)

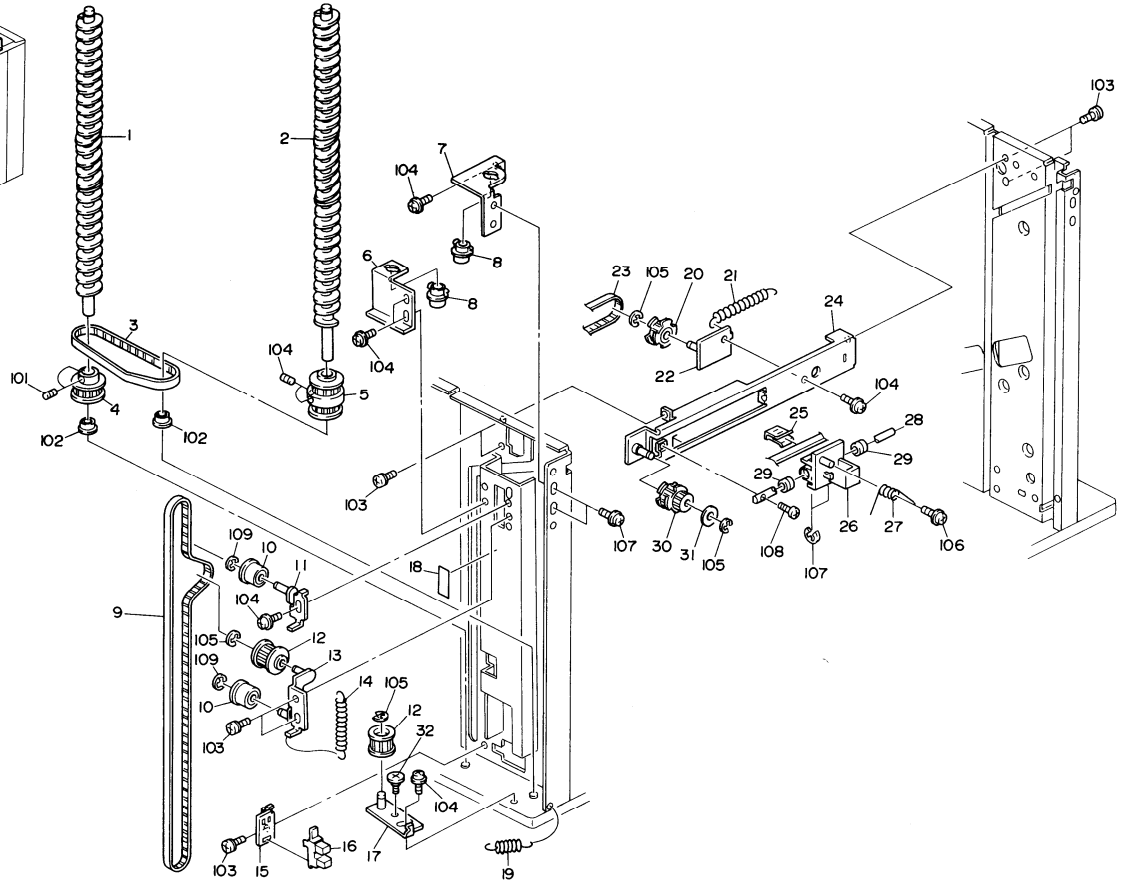
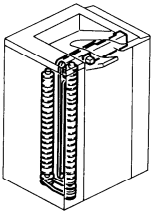


## 5. STAPLE UNIT 2 (A377)

Index No.	Part No.	Description	Q'ty Per Assembly
1	A377 1607	Entrance Guide	1
2	A377 4742	Slider Guide	2
3	A377 1606	Stapler Cover	1
4	A010 5700	Sensor	1
5	AJ01 1007	Stapler-EH-5RR4	1
6	5413 1882	Stepped Screw	1
7	A377 5480	Paper Sensor Harness	1
8	A377 4711	Stapler Bracket	1
9	A377 5440	Stapler Harness	1
10	A377 4745	Harness Cover	1
11	AB03 0394	Timing Pulley-30Z	2
12	AX04 0067	Stepping Motor - 0.95A 9.5V	1
13	AA04 3357	Timing Belt - 1110P2M6	1
14	A469 3175	Idle Pulley Stud - Short	1
15	5887 4185	Idler Pulley	1
16	A377 4738	Harness Bracket	1
17	5442 1659	Stepped Screw - M4	1
18	A377 5450	Position Sensor Harness	1
19	A377 4736	Timing Belt Stopper	1
20	A377 4731	Stapler Slider	1
21	A377 4741	Roller - M14	3
22	AW02 0021	Photointerruptor - 175487-3	1
23	A377 4721	Stapler Slide Bracket	1

Index No.	Part No.	Description	Q'ty Per Assembly
101	0344 0060F	Philips Truss Head Screw - M4x6	
102	0720 0040E	Retaining Ring - M4	
103	0313 0100B	Philips Pan Head Screw - M3x10	
104	0950 4006B	Screw - M4x6	
105	1106 0193	Bushing - 7.9mm	
106	0951 3005B	Philips Screw With Flat Washer M3x5	
107	1105 0310	Wire Clamp	
108	1102 5194	Connector - 7P	

6. STAPLE DRIVE SECTION 1 (A377)

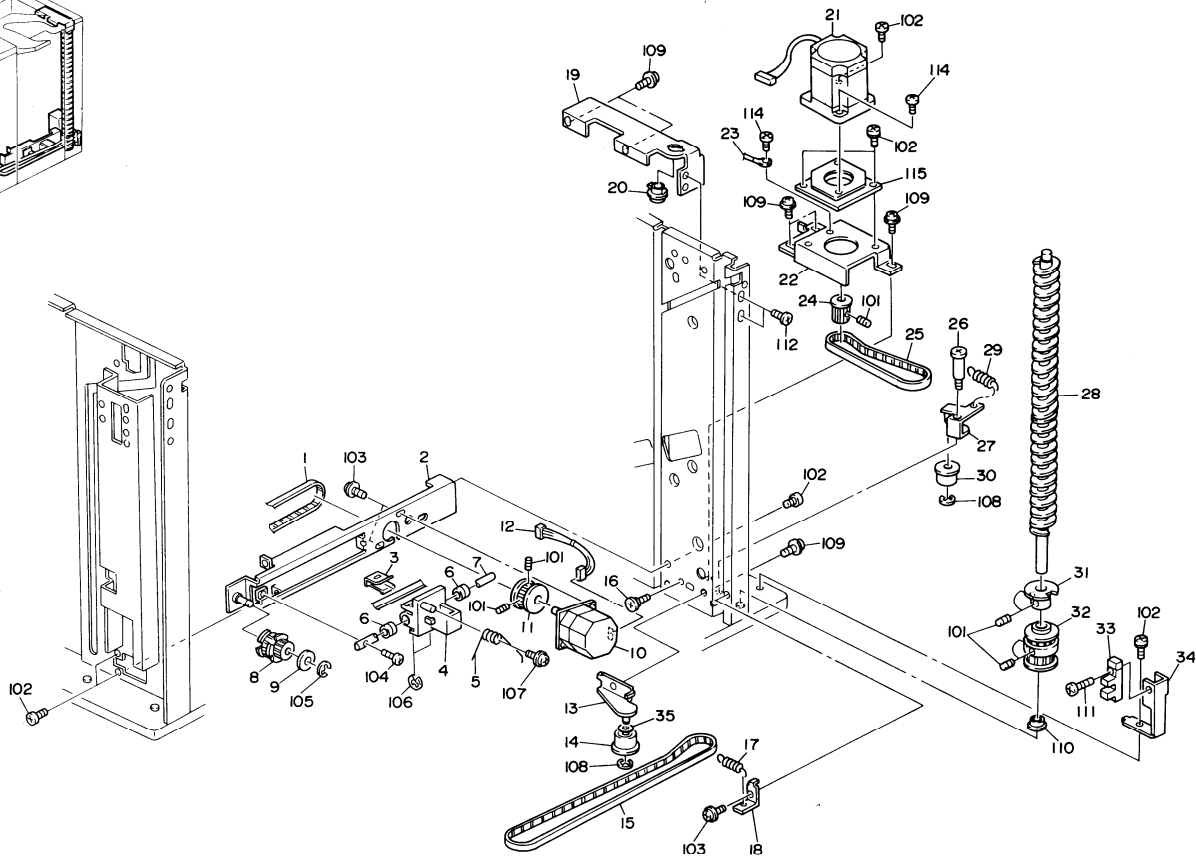
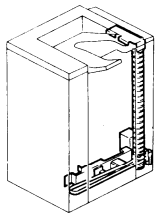


## 6. STAPLE DRIVE SECTION 1 (A377)

Index No.	Part No.	Description	Q'ty Per Assembly
1	A377 3102	Short Helical Wheel	1
2	A377 3112	Long Helical Wheel	1
3	AA04 3350	Timing Belt - B60S3M426	1
4	A377 3151	Timing Pulley - 36Z	1
5	A377 3156	Timing Pulley - 36Z L8/L8	1
6	A377 3131	Rear Right Fixing Plate	1
7	A377 3136	Rear Left Fixing Plate	1
8	A377 3145	Helical Wheel Bushing	2
9	AA04 3356	Timing Belt - B60S3M1680	1
10	5887 4185	Idler Pulley	2
11	A377 4186	Idler Bracket	1
12	5214 1811	Idle Pulley - 20Z	2
13	A377 4181	Jogger Adjusting Bracket	1
14	AA06 0548	Tension Spring	1
15	A377 4161	Jogger Sensor Bracket	1
16	AW02 0021	Photointerruptor - 175487-3	1
17	A377 3246	Adjusting Bracket	1
18	A377 1840	Decal - Service	1
19	AA06 0555	Tension Spring	1
20	AB03 0393	Timing Pulley - 25Z	1
21	AA06 0544	Tension Spring	1
22	A377 4141	Pulley Bracket	1
23	AA04 3354	Timing Belt - B40S3M633	1
24	A377 4131	Upper Jogger Stay	1
25	A354 4475	Timing Belt Stopper - Side Fence	1
26	A377 4112	Upper Jogger Plate Holder	1
27	AA06 6549	Jogger Plate Spring	1
28	A377 4138	Jogger Shaft	1
29	AA08 2042	Bushing - 6x10x6.5mm	2
30	AB03 3051	Timing Pulley - 25Z	1
31	A300 3812	Spacer - 6x22x1.5	1
32	5403 2075	Stepped Screw	1

Index No.	Part No.	Description	Q'ty Per Assembly
101	0574 0040E	Hexagon Headless Set Screw - M4x4	
102	0741 3006	Ball Bearing - 6x17x6mm	
103	0950 4006B	Screw - M4x6	
104	0951 4006B	Phillips Screw With Washer - M4x6	
105	0720 0040E	Retaining Ring - M4	
106	0965 3008B	Tapping Screw With Washer - M3x8	
107	0720 0080E	Retaining Ring - M8	
108	0313 0080B	Phillips Pan Head Screw - M3x8	
109	0720 0060E	Retaining Ring - M6	

# 7. STAPLE DRIVE SECTION 2 (A377)



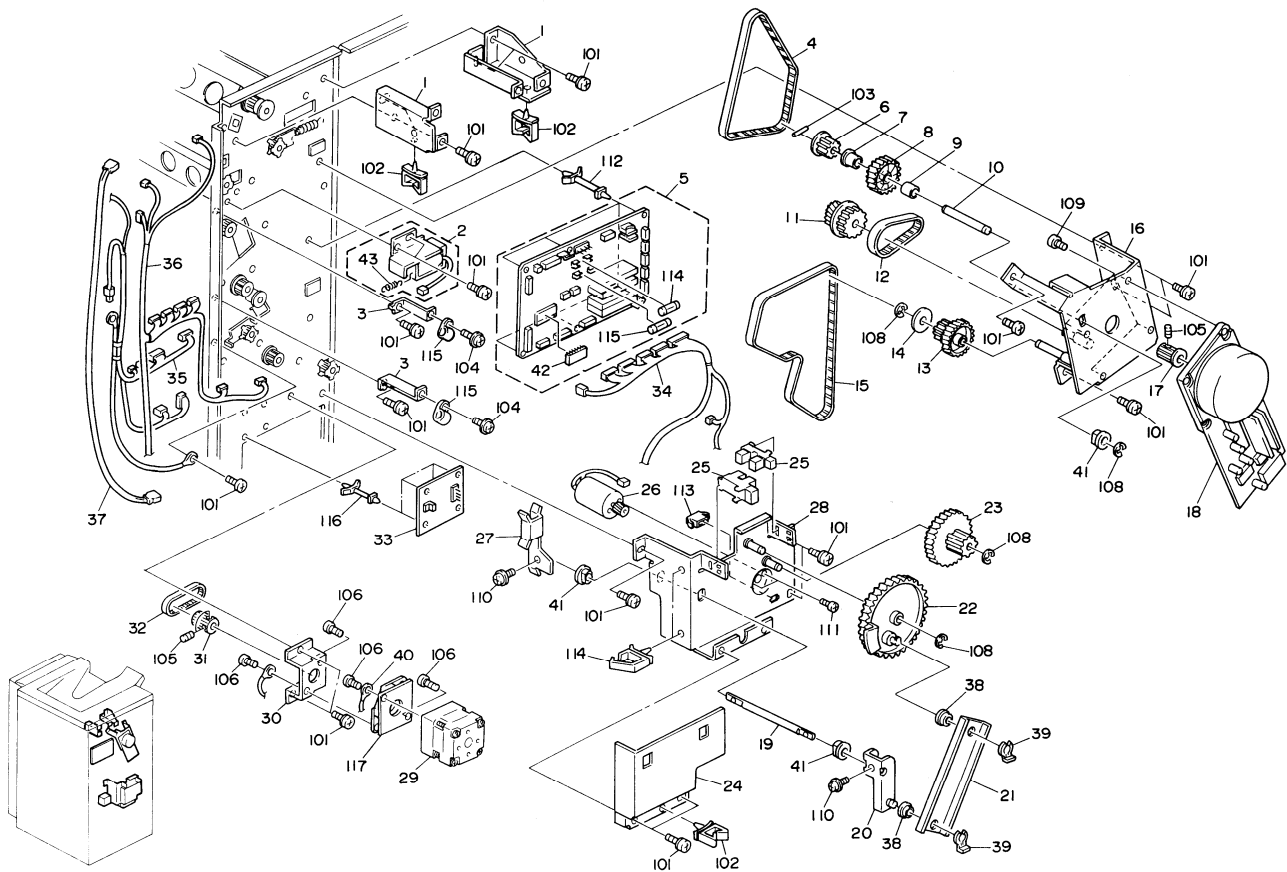


## 7. STAPLE DRIVE SECTION 2 (A377)

Index No.	Part No.	Description	Q'ty Per Assembly
1	AA04 3354	Timing Belt - B40S3M633	1
2	A377 4133	Lower Jogger Stay	1
3	A354 4475	Timing Belt Stopper - Side Fence	1
4	A377 4122	Lower Jogger Plate Holder	1
5	AA06 6549	Jogger Plate Spring	1
6	AA08 2042	Bushing - 6x10x6.5mm	2
7	A377 4138	Jogger Shaft	1
8	AB03 3051	Timing Pulley - 25Z	1
9	A300 3812	Spacer - 6X22X1.5	1
10	AX04 0066	Stepping Motor - 11W	1
11	A377 4216	Timing Pulley - 34Z	1
12	A377 5490	Jogger Harness	1
13	A377 3242	Adjusting Bracket	1
14	5887 4185	Idler Pulley	1
15	AA04 3352	Timing Belt - B60S3M918	1
16	5206 2684	Shoulder Screw - M3	1
17	AA06 0555	Tension Spring	1
18	5887 2245	Spring Anchor	1
19	A377 3141	Front Fixing Plate	1
20	A377 3145	Helical Wheel Bushing	1
21	AX06 0081	Stepping Motor - DC 8.4W	1
22	A377 3202	Stepping Motor Bracket	1
23	A377 5465	Grounding Harness	1
24	AB03 0437	Timing Pulley - 18Z	1
25	AA04 3353	Timing Belt - B100S3M300	1
26	A469 3142	Idle Pulley Stud - Long	1
27	A377 3262	Tension Bracket	1
28	A377 3112	Long Helical Wheel	1
29	AA06 0556	Tension Spring	1
30	5887 2291	Idle Roller	1
31	A377 3166	Bin Positioning Shutter	1
32	A377 3161	Timing Pulley - 36Z L8/L12	1
33	AW02 0022	Photointerruptor	1
34	A377 3212	Positioning Sensor Bracket	1
35	AA13 2152	Spacer - 8x20x1	1

Index No.	Part No.	Description	Q'ty Per Assembly
101	0574 0040E	Hexagon Headless Set Screw - M4x4	
102	0950 4006B	Screw - M4x6	
103	0951 3005B	Philips Screw With Flat Washer M3x5	
104	0313 0080B	Philips Pan Head Screw - M3x8	
105	0720 0040E	Retaining Ring - M4	
106	0720 0080E	Retaining Ring - M8	
107	0965 3008B	Tapping Screw With Washer - M3x8	
108	0720 0060E	Retaining Ring - M6	
109	0951 4006B	Philips Screw With Washer - M4x6	
110	0741 3006	Ball Bearing - 6x17x6mm	
111	0314 0100B	Philips Pan Head Screw - M4x10	
112	0344 0060F	Philips Truss Head Screw - M4x6	
113	1005 0946	Stepping Motor Cushion	
114	0314 0080B	Philips Pan Head Screw - M4x8	
115	1005 0946	Stepping Motor Cushion	

## 8. DRIVE AND ELECTRICAL SECTION (A377)

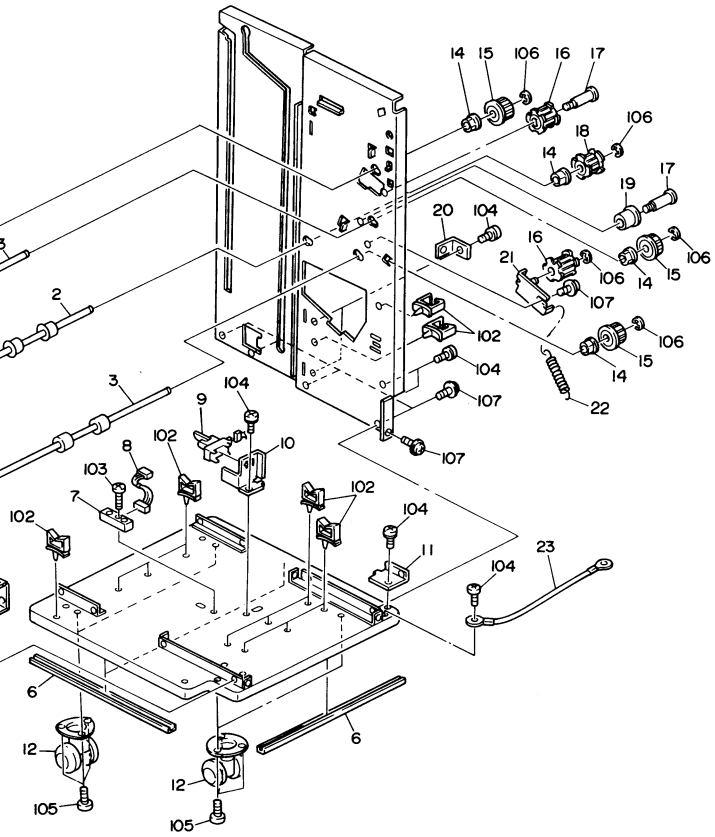
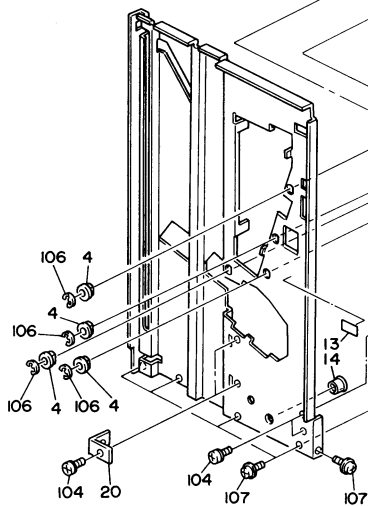
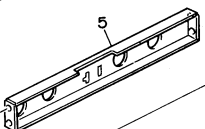
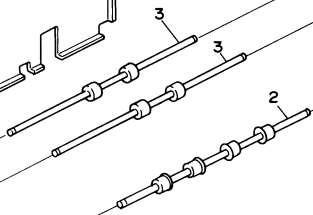
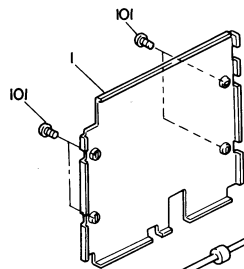
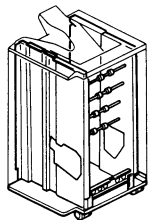


## 8. DRIVE AND ELECTRICAL SECTION (A377)

Index No.	Part No.	Description	Q'ty Per Assembly
1	A377 1636	Upper Rear Cover Bracket	2
2	A377 2340	Junction Gate Solenoid	1
3	5442 5839	Angle-Cord Clamp 30	2
4	AA04 3350	Timing Belt- B60S3M426	1
5	A377 5100	Main Control Board	1
6	AB03 0325	Pulley-20Z	1
7	AA08 0071	Bushing-6x10x6	1
8	AB01 0337	Gear-70Z	1
9	A377 2216	Spacer-6x10x9	1
10	AA14 5215	Clutch Shaft	1
11	AB03 3053	Gear Pulley - 35/43Z	1
12	AA04 3347	Timing Belt - 126P2M6	1
13	AB03 3054	Gear Pulley - 70/20Z	1
14	A300 3812	Spacer - 6x22x1.5	1
15	AA04 3349	Timing Belt - 660P3M6	1
16	A377 2211	Brushless Motor Bracket	1
17	AB03 0436	Timing Pulley - 20Z	1
18	AX06 0080	Brushless Motor -DC 15W	1
19	A377 3323	Link Shaft	1
20	A377 3315	Link Bracket	1
21	A377 3322	End Fence Link	1
22	A377 3326	Gear - 70Z	1
23	AB01 7305	Gear - 18/78Z	1
24	A377 3331	Harness Cover	1
25	AW02 0021	Photointerruptor - 175487-3	2
26	AX04 0053	DC Motor - 24V/2.2W	1
27	A377 3321	End Fence Guide	1
28	A377 3311	End Fence Bracket	1
29	AX05 0057	stepping Motor - DC24V 3.84W	1
30	A377 2231	Stepping Motor Bracket	1
31	AB03 0435	Timing Pulley - 16Z	1
32	AA04 3348	Timing Belt - 150P3M6	1
33	A377 5200	DC Supply Board	1
34	A377 5415	Lower Motor Harness	1
35	A377 5425	Jpper Motor Harness	1

Index No.	Part No.	Description	Q'ty Per Assembly
36	A377 5430	Sensor Harness	1
37	AW03 0032	Optical Fiber	1
38	AA08 0072	Bushing - 6x10X3	2
39	5447 2681	Snap Ring	2
40	A354 5230	Grounging Harness	1
41	5053 0447	Bushing - 6mm	3
42	A377 5103	IC - AM27C256-205DC	1
43	A377 2346	Tension Spring - 20.5mm	1
101	0950 4006B	Screw - M4x6	
102	1105 0310	Wire Clamp	
103	0632 0100G	Pin - 2x10mm	
104	0951 4008B	Philips Screw With Washer - M4x8	
105	0574 0040E	Hexagon Headless Set Screw - M4x4	
106	050B	Philips Pan Head Screw - M3x5	
107	0944	Stepping Motor Cushion	
108	0720 0040E	Retaining Ring - M4	
109	0314 0060B	Philips Pan Head Screw - M4x6	
110	0951 3005B	Philips Screw With Flat Washer M3x5	
111	0800 0072	Philips Pan Head Screw - M2.6x4	
112	1105 0134	Locking Support	
113	1102 4473	CT Connector - 2P	
114	1107 0752	Fuse - 5A 250V	
115	1107 0748	Fuse - 2A 250V	
116	1105 0160	Clamp	
117	1005 0944	Stepping Motor Cushion	

# 9. FRAME SECTION (A377)



### 9. FRAME SECTION (A377)

Index No.	Part No.	Description	Q'ty Per Assembly
1	A377 1626	Lower Inner Cover	1
2	AF02 0306	Exit Roller	1
3	AF02 0304	Transport Roller	3
4	5053 0447	Bushing-6mm	4
5	A377 1151	Stay	1
6	A377 1118	Edge Guard	3
7	AW02 0026	Upper Bin/jam Sensor	1
8	A377 5475	Lower Bin Sensor Harness	1
9	AW02 0049	Photointerruptor - OS -580213-703	1
10	A377 3222	Home Position Sensor Bracket	1
11	A377 1637	Lower Rear Cover Bracket	1
12	AH01 2010	Caster - 50m	4
13	A377 1860	Decal - Add Staple	1
14	AA08 0071	Bushing -6x10x6	4
15	AB03 0434	Timing Pulley - 20Z	3
16	AB03 0278	Idler - 20z	2
17	5887 4195	Stopper Screw	2
18	AB03 0374	Timing Pulley - 20Z	1
19	5887 4185	Idler Pulley	1
20	A377 1656	Inner Cover Angle	4
21	A377 2221	Tightener	1
22	AA06 0092	Release Spring	1
23	A377 5495	Grounding Harness	1

Index No.	Part No.	Description	Q'ty Per Assembly
101	0344 0060F	Philips Truss Head Screw - M4x6	
102	1105 0310	Wire Clamp	
103	0313 0140B	Philips Pan Head Screw - M3x14	
104	0950 4006B	Screw - M4x6	
105	0315 0080B	Philips Pan Head Screw - M5x8	
106	0720 0040E	Retaining Ring - M4	
107	0951 4008B	Philips Screw With Washer - M4x8	
108	0720 0060E	Retaining Ring - M6	



## 10. DECAL AND DOCUMENT (A377)

Index No.	Part No.	Description	Q'ty Per Assembly
1	A377 1850	Decal - Misfed Removal	1
2	A377 1860	Decal - Add Staple	1
3	A377 1870	Decal - R1	1
4	A377 1875	Decal - R2	1
5	A377 1840	Decal - Service	1

Index No.	Part No.	Description	Q'ty Per Assembly
-----------	----------	-------------	-------------------

# **PARTS INDEX**



Part No.	Description	Page and Index No.
A377 1118	Edge Guard	21- 6
A377 1126	Front Cover Plate	9-24
A377 1138	Magnet Catch Seal	9- 14
A377 1141	Upper Stay	7- 3
A377 1151	Stay	7-23
A377 1151	Stay	21- 5
A377 1171	Exit Stay	9- 16
A377 1181	Middle Stay	9- 19
A377 1182	Joint Lever	9-21
A377 1186	Front Joint Bracket	5-25
A377 1187	Rear Joint Bracket	5-24
A377 1511	Top Cover	5- 14
A377 1521	Front Left Cover	5-21
A377 1531	Lower Cover	5- 17
A377 1541	Rear Cover	5- 15
A377 1551	Left Cover	5-20
A377 1571	Front Door	5- 1
A377 1581	Hinge Cover	5- 3
A377 1601	Inner Cover	5-22
A377 1606	Stapler Cover	13- 3
A377 1607	Entrance Guide	13- 1
A377 1611	Small Proof Tray	5- 13
A377 1621	Upper Inner Cover	9- 1
A377 1626	Lower Inner Cover	21- 1
A377 1631	Upper Wheel Cover	5- 16
A377 1636	Upper Rear Cover Bracket	19- 1
A377 1637	Lower Rear Cover Bracket	21- 11
A377 1641	Hinge Bracket	5- 19
A377 1645	Hinge	5- 2
A377 1651	Magnet Catch Plate	5- 4
A377 1656	Inner Cover Angle	9- 15
A377 1656	Inner Cover Angle	21- 20
A377 1661	Door Switch Cover	7-35
A377 1662	Door Switch Actuator	7- 34
A377 1840	Decal - Service	15- 18

Part No.	Description	Page and Index No.
A377 1840	Decal - Service	23- 5
A377 1850	Decal - Misfed Removal	5-23
A377 1850	Decal - Misfed Removal	23- 1
A377 1860	Decal - Add Staple	21- 13
A377 1860	Decal - Add Staple	23- 2
A377 1870	Decal - R1	7-33
A377 1870	Decal - R1	23- 3
A377 1875	Decal - R2	9-23
A377 1875	Decal - R2	23- 4
A377 2111	Lower Entrance Guide	9- 2
A377 2121	Relay Guide	9- 4
A377 2122	Entrance Guide	5-26
A377 2131	Right Lower Guide	9- 12
A377 2141	Left Lower Guide	9- 9
A377 2142	Grounding Spring Plate	9- 6
A377 2144	Antistatic Brush	9- 5
A377 2146	Exit Guide Mylar	9-25
A377 2161	Middle Guide Plate	9- 17
A377 2166	Middle Guide Mylar	9-26
A377 2211	Brushless Motor Bracket	19- 16
A377 2216	Spacer - 6X10X9	19- 9
A377 2221	Tightener	7- 12
A377 2221	Tightener	21-21
A377 2231	Stepping Motor Bracket	19-30
A377 2311	Right Guide Plate	7- 10
A377 2316	Upper Left Guide	7- 7
A377 2321	Left Guide Plate	7-26
A377 2326	Support Plate	7-27
A377 2331	Junction Gate	7-29
A377 2332	Junction Gate Lever	7-30
A377 2333	Junction Gate Bracket	7-32
A377 2340	Junction Gate Solenoid	19- 2
A377 2346	Tension Spring - 20.5mm	19-43
A377 3102	Short Helical Wheel	15- 1
A377 3112	Long Helical Wheel	15- 2

Part No.	Description	Page and Index No.
A377 3112	Long Helical Wheel	17-28
A377 3131	Rear Right Fixing Plate	15- 6
A377 3136	Rear Left Fixing Plate	15- 7
A377 3141	Front Fixing Plate	17- 19
A377 3145	Helical Wheel Bushing	15- 8
A377 3145	Helical Wheel Bushing	17-20
A377 3151	Timing Pulley - 36Z	15- 4
A377 3156	Timing Pulley - 36Z L8/L8	15- 5
A377 3161	Timing Pulley - 36Z L8/L12	17-32
A377 3166	Bin Positioning Shutter	17-31
A377 3202	Stepping Motor Bracket	17-22
A377 3212	Positioning Sensor Bracket	17-34
A377 3222	Home Position Sensor Bracket	21- 10
A377 3242	Adjusting Bracket	17- 13
A377 3246	Adjusting Bracket	15- 17
A377 3262	Tension Bracket	17-27
A377 3311	End Fence Bracket	19-28
A377 3315	Link Bracket	19-20
A377 3321	End Fence Guide	19-27
A377 3322	End Fence Link	19-21
A377 3323	Link Shaft	19- 19
A377 3326	Gear - 70Z	19-22
A377 3331	Harness Cover	19-24
A377 3410	Bin Ass'y	5- 8
A377 3431	Bin End Fence	5- 11
A377 3441	End Fence Shaft	5- 12
A377 3446	Guide Roller	5- 7
A377 3447	Small Guide Roller	5- 6
A377 3460	Supporting Bin	5- 5
A377 4112	Upper Jogger Plate Holder	15-26
A377 4122	Lower Jogger Plate Holder	17- 4
A377 4131	Upper Jogger Stay	15-24
A377 4133	Lower Jogger Stay	17- 2
A377 4138	Jogger Shaft	15-28
A377 4138	Jogger Shaft	17- 7

Part No.	Description	Page and Index No.
A377 4141	Pulley Bracket	15-22
A377 4151	Jogger Plate	5- 9
A377 4161	Jogger Sensor Bracket	15- 15
A377 4181	Jogger Adjusting Bracket	15- 13
A377 4186	Idler Bracket	15- 11
A377 4216	Timing Pulley - 34Z	17- 11
A377 4411	Upper Gripper Arm	11- 2
A377 4413	Lower Gripper Arm	11- 4
A377 4421	Solenoid Lever	11- 12
A377 4425	Solenoid Arm Bracket	11- 9
A377 4432	Gripper Arm Shaft - M6	11- 1
A377 4433	Gripper Arm Shaft - M4	11- 13
A377 4434	Gripper Lock Plate	11- 16
A377 4435	Gripper Arm Solenoid	11- 11
A377 4436	Gripper Solenoid Bracket	11- 7
A377 4441	Slider Support Bracket	11-26
A377 4451	Slider Arm	11-24
A377 4455	Slide Roller	11-25
A377 4460	Gripper Slid Solenoid	11-22
A377 4463	Hook	11-21
A377 4465	Gripper Guide Rod	11- 8
A377 4466	Cushion	11- 14
A377 4471	Gripper Bracket	11-27
A377 4485	Gripper Guide Shaft	11-30
A377 4488	Gripper Harness Bracket	11-28
A377 4491	Timing Belt Stopper	11-23
A377 4711	Stapler Bracket	13- 8
A377 4721	Stapler Slide Bracket	13-23
A377 4731	Stapler Slider	13-20
A377 4736	Timing Belt Stopper	13- 19
A377 4738	Harness Bracket	13- 16
A377 4741	Roller - M14	13-21
A377 4742	Slider Guide	13- 2
A377 4745	Harness Cover	13- 10
A377 5100	Main Control Board	19- 5

Part No.	Description	Page and Index No.
A377 5103	IC - AM27C256-205DC	19-42
A377 5200	DC Supply Board	19-33
A377 5415	Lower Motor Harness	19-34
A377 5425	Upper Motor Harness	19-35
A377 5430	Sensor Harness	19-36
A377 5440	Stapler Harness	13- 9
A377 5450	Position Sensor Harness	13- 18
A377 5460	Transport Sensor Harness	7-21
A377 5465	Grounding Harness	17-23
A377 5470	Upper Bin Sensor Harness	7- 2
A377 5475	Lower Bin Sensor Harness	21- 8
A377 5480	Paper Sensor Harness	13- 7
A377 5490	Jogger Harness	17- 12
A377 5495	Grounding Harness	21-23

Part No.	Description	Page and Index No.
AA04 3347	Timing Belt - 126P2M6	19- 12
AA04 3348	Timing Belt - 150P3M6	19-32
AA04 3349	Timing Belt - 660P3M6	19- 15
AA04 3350	Timing Belt - B60S3M426	15- 3
AA04 3350	Timing Belt - B60S3M426	19- 4
AA04 3352	Timing Belt - B60S3M918	17- 15
AA04 3353	Timing Belt - B100S3M300	17-25
AA04 3354	Timing Belt - B40S3M633	15-23
AA04 3354	Timing Belt - B40S3M633	17- 1
AA04 3355	Timing Belt - B40S2M320	11- 10
AA04 3356	Timing Belt - B60S3M1680	15- 9
AA04 3357	Timing Belt - 1110P2M6	13- 13
AA06 0061	Spring - Fork Gate Lever	11- 5
AA06 0092	Release Spring	7- 11
AA06 0092	Release Spring	21-22
AA06 0544	Tension Spring	15-21
AA06 0547	Tension Spring	11-20
AA06 0548	Tension Spring	15- 14
AA06 0551	Pressure Spring	9-20
AA06 0555	Tension Spring	15- 19
AA06 0555	Tension Spring	17- 17
AA06 0556	Tension Spring	17-29
AA06 6225	End Fence Spring	5- 10
AA06 6549	Jogger Plate Spring	15-27
AA06 6549	Jogger Plate Spring	17- 5
AA08 0034	Bushing - 4x5x7	7- 5
AA08 0034	Bushing - 4x5x7	9- 8
AA08 0071	Bushing -6x10X6	7- 19
AA08 0071	Bushing -6x10X6	19- 7
AA08 0071	Bushing -6x10x6	21- 14
AA08 0072	Bushing - 6x10X3	11- 3
AA08 0072	Bushing - 6x10X3	19-38
AA08 2042	Bushing - 6x10x6.5mm	11- 15
AA08 2042	Bushing - 6x10x6.5mm	15-29
AA08 2042	Bushing - 6x10x6.5mm	17- 6

Part No.	Description	Page and Index No.
AA12 0027	Antistatic Brush	7- 9
AA13 2152	Spacer - 8x20x1	17- 35
AA14 3059	Pin - 6x16	9- 13
AA14 5215	Clutch Shaft	19- 10
AB01 0337	Gear - 70Z	19- 8
AB01 7305	Gear -18/78Z	19- 23
AB03 0216	Pulley - 15Z	11- 18
AB03 0218	Pulley - 15Z	11-33
AB03 0278	Idler -20Z	7- 13
AB03 0278	Idler -20Z	21- 16
AB03 0325	Pulley - 20Z	19- 6
AB03 0374	Timing Pulley - 20Z	7- 14
AB03 0374	Timing Pulley - 20Z	21- 18
AB03 0393	Timing Pulley - 25Z	15-20
AB03 0394	Timing Pulley - 30Z	13- 11
AB03 0434	Timing Pulley - 20Z	21- 15
AB03 0435	Timing Pulley - 16Z	19-31
AB03 0436	Timing Pulley - 20Z	19- 17
AB03 0437	Timing Pulley - 18Z	17-24
AB03 3051	Timing Pulley - 25Z	15-30
AB03 3051	Timing Pulley - 25Z	17- 8
AB03 3053	Gear Pulley - 35/43Z	19- 11
AB03 3054	Gear Pulley - 70/20Z	19- 13
AF02 0304	Transport Roller	21- 3
AF02 0305	Transport Roller	7-24
AF02 0306	Exit Roller	21- 2
AF02 0307	Exit Roller	7- 8
AF02 2068	Driver Roller	7- 6
AF02 2068	Driver Roller	9- 10
AG07 0004	Magnetic Catch	7-28
AG07 0004	Magnetic Catch	9- 11
AH01 2010	Caster - 50m	21- 12
AJ01 1007	Stapler - EH-5RR4	13- 5
AW02 0021	Photointerruptor - 175487-3	13-22
AW02 0021	Photointerruptor - 175487-3	15- 16

Part No.	Description	Page and Index No.
AW02 0021	Photointerruptor - 175487-3	19-25
AW02 0022	Photointerruptor	11-31
AW02 0022	Photointerruptor	17-33
AW02 0025	Lower Bin/jam Sensor	7- 1
AW02 0026	Upper Bin/jam Sensor	21- 7
AW02 0049	Photointerruptor - OS - 580213-703	7-22
AW02 0049	Photointerruptor - OS - 580213-703	21- 9
AW03 0032	Optical Fiber	19-37
AX04 0053	DC Motor- 24V/2.2W	19-26
AX04 0066	Stepping Motor -11W	17- 10
AX04 0067	Stepping Motor - 0.95A 9.5V	13- 12
AX05 0057	Stepping Motor - DC24V 3.84W	11- 19
AX05 0057	Stepping Motor - DC24V 3.84W	19-29
AX06 0080	Brushless Motor -DC 15W	19- 18
AX06 0081	Stepping Motor - DC 8.4W	17-21
A010 5700	Sensor	13- 4
A300 3812	Spacer - 6X22X1.5	7- 18
A300 3812	Spacer - 6x22x1.5	15-31
A300 3812	Spacer - 6X22X1.5	17- 9
A300 3812	Spacer - 6X22X1.5	19- 14
A300 3826	Pressre Spping	7- 16
A354 1261	Pulley - 20Z	7- 15
A354 1266	Torque Limiter Collar	7- 17
A354 4475	Timing Belt Stopper - Side Fence	15-25
A354 4475	Timing Belt Stopper - Side Fence	17- 3
A354 5230	Grounging Harness	19-40
A458 2479	Lock Pin Spring	7- 4
A458 2479	Lock Pin Spring	9- 7
A469 3142	Idle Pulley Stud - Long	17-26
A469 3175	Idle Pulley Stud - Short	13- 14
A498 4625	Arm Cushion	11- 6
A498 4665	Pulley Flange	11-32
A498 6085	Caster Stopper	5-27
5053 0447	Bushing - 6mm	7-25
5053 0447	Bushing - 6mm	19-41

Part No.	Description	Page and Index No.
5053 0447	Bushing - 6mm	21- 4
5206 2684	Shoulder Screw - M3	17- 16
5214 1811	Idle Pulley - 20Z	15- 12
5403 2075	Stepped Screw	9- 18
5403 2075	Stepped Screw	15-32
5413 1875	Knob Screw	9- 3
5413 1882	Stepped Screw	7-20
5413 1882	Stepped Screw	9-22
5413 1882	Stepped Screw	11- 17
5413 1882	Stepped Screw	13- 6
5419 5714	Stepped Screw - M4	11-29
5442 1659	Stepped Screw - M4	13- 17
5442 5839	Angle - Cord Clamp 20	7-36
5442 5839	Angle - Cord Clamp 30	19- 3
5447 2681	Snap Ring	19-39
5875 2088	Shoulder Screw - M4	5- 18
5887 2245	Spring Anchor	17- 18
5887 2291	Idle Roller	17-30
5887 4185	Idler Pulley	13- 15
5887 4185	Idler Pulley	15- 10
5887 4185	Idler Pulley	17- 14
5887 4185	Idler Pulley	21- 19
5887 4195	Stopper Screw	21- 17
5940 2641	Feed-in Solenoid Spring	7- 31

Part No.	Description	Page and Index No.
0313 0050B	Philips Pan Head Screw - M3x5	11-105
0313 0050B	Philips Pan Head Screw - M3x5	19-106
0313 0080B	Philips Pan Head Screw - M3x8	15-108
0313 0080B	Philips Pan Head Screw - M3x8	17-104
0313 0100B	Philips Pan Head Screw - M3x10	13-103
0313 0140B	Philips Pan Head Screw - M3x14	7-101
0313 0140B	Philips Pan Head Screw - M3x14	21-103
0314 0060B	Philips Pan Head Screw - M4x6	19-109
0314 0080B	Philips Pan Head Screw - M4x8	17-114
0314 0100B	Philips Pan Head Screw - M4x10	11-110
0314 0100B	Philips Pan Head Screw - M4x10	17-111
0315 0080B	Philips Pan Head Screw - M5x8	21-105
0344 0060F	Philips Truss Head Screw - M4x6	5-102
0344 0060F	Philips Truss Head Screw - M4x6	9-101
0344 0060F	Philips Truss Head Screw - M4x6	13-101
0344 0060F	Philips Truss Head Screw - M4x6	17-112
0344 0060F	Philips Truss Head Screw - M4x6	21-101
0344 0080F	Philips Truss Head Screw - M4x8	5-103
0353 0060W	Philips Pan Head Screw - M3x6	7-109
0353 0060W	Philips Pan Head Screw - M3x6	9-103
0414 0122W	Tapping Screw - M4x12	7-108
0574 0040E	Hexagon Headless Set Screw - M4x4	11-106
0574 0040E	Hexagon Headless Set Screw - M4x4	15-101
0574 0040E	Hexagon Headless Set Screw - M4x4	17-101
0574 0040E	Hexagon Headless Set Screw - M4x4	19-105
0632 0100G	Pin - 2x10mm	19-103
0720 0030E	Retaining Ring - M3	7-104
0720 0030E	Retaining Ring - M3	11-102
0720 0040E	Retaining Ring - M4	7-107
0720 0040E	Retaining Ring - M4	11-101
0720 0040E	Retaining Ring - M4	13-102
0720 0040E	Retaining Ring - M4	15-105
0720 0040E	Retaining Ring - M4	17-105
0720 0040E	Retaining Ring - M4	19-108
0720 0040E	Retaining Ring - M4	21-106

Part No.	Description	Page and Index No.
0720 0060E	Retaining Ring - M6	7-106
0720 0060E	Retaining Ring - M6	15-109
0720 0060E	Retaining Ring - M6	17-108
0720 0060E	Retaining Ring - M6	21-108
0720 0080E	Retaining Ring - M8	11-104
0720 0080E	Retaining Ring - M8	15-107
0720 0080E	Retaining Ring - M8	17-106
0741 3006	Ball Bearing - 6x17x6mm	15-102
0741 3006	Ball Bearing - 6x17x6mm	17-110
0800 0072	Philips Pan Head Screw - M2.6x4	19-111
0950 4006B	Screw - M4x6	5-101
0950 4006B	Screw - M4x6	9-102
0950 4006B	Screw - M4x6	11-103
0950 4006B	Screw - M4x6	13-104
0950 4006B	Screw - M4x6	15-103
0950 4006B	Screw - M4x6	17-102
0950 4006B	Screw - M4x6	19-101
0950 4006B	Screw - M4x6	21-104
0951 3005B	Philips Screw With Flat Washer M3x5	11-111
0951 3005B	Philips Screw With Flat Washer M3x5	13-106
0951 3005B	Philips Screw With Flat Washer M3x5	17-103
0951 3005B	Philips Screw With Flat Washer M3x5	19-110
0951 4006B	Philips Screw With Washer - M4x6	7-105
0951 4006B	Philips Screw With Washer - M4x6	7-111
0951 4006B	Philips Screw With Washer - M4x6	11-107
0951 4006B	Philips Screw With Washer - M4x6	15-104
0951 4006B	Philips Screw With Washer - M4x6	17-109
0951 4008B	Philips Screw With Washer - M4x8	19-104
0951 4008B	Philips Screw With Washer - M4x8	21-107
0965 3008B	Tapping Screw With Washer - M3x8	15-106
0965 3008B	Tapping Screw With Washer - M3x8	17-107
1005 0944	Stepping Motor Cushion	19-107
1005 0944	Stepping Motor Cushion	19-117
1005 0946	Stepping Motor Cushion	17-113
1005 0946	Stepping Motor Cushion	17-115

Part No.	Description	Page and Index No.
1102 4473	CT Connector - 2P	19-113
1102 4924	CT Connector - 4P	7-112
1102 5194	Connector - 7P	13-108
1105 0134	Locking Support	19-112
1105 0160	Clamp	19-116
1105 0196	Harness Clamp	7-103
1105 0234	Clamp	11-108
1105 0291	Wire Saddle	11-109
1105 0310	Wire Clamp	13-107
1105 0310	Wire Clamp	19-102
1105 0310	Wire Clamp	21-102
1106 0193	Bushing - 7.9mm	7-102
1106 0193	Bushing - 7.9mm	9-104
1106 0193	Bushing - 7.9mm	13-105
1107 0748	Fuse - 2A 250V	19-115
1107 0752	Fuse - 5A 250V	19-114
1204 2334	Safety Switch - FA1 L-AA20	7-110